

1U/2U 19" & ETSI Fiber Optic Patch Panel with Telescopic Rails CAN-FPP-100

Overview

Provides professional cable management and fiber termination with smooth telescopic pull-out rail system

Highlights

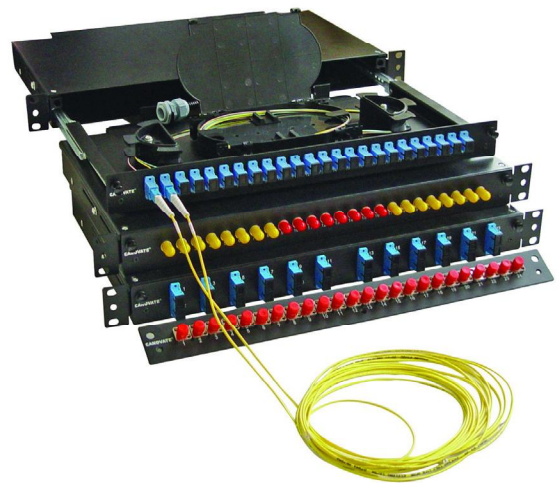
- ✓ 1U and 2U versions (12,24, 36 and 48 port capacity)
- ✓ Smooth and convenient mechanical sliding system
- ✓ Manages small & large quantities of fiber with a high packing density
- ✓ Cable glands to secure the incoming fiber, allows min movement
- ✓ Fiber guide tubes to protect and direct the fibers to the cassettes in a professional way
- ✓ Easy to maintain and extend
- ✓ Minimum bend radius of fibers and strain relief for all entry cables
- ✓ Fiber bend radius control of 35mm
- ✓ Capacity of up to 48 ports
- ✓ All known connector types such as SC, FC, ST, E2000, LC, MU etc. are possible)

Technical Details

Dimensions (19") 465 mm (W) x 238 mm (D) x 1U (H)
Material Mild Steel
Color Powder coat RAL7035 or RAL9005
Weight 4 kg
Maximum Port Capacity 48 Ports

Applications

FTTX applications, Datacenter and LAN & WAN projects



Various Adapter Types

